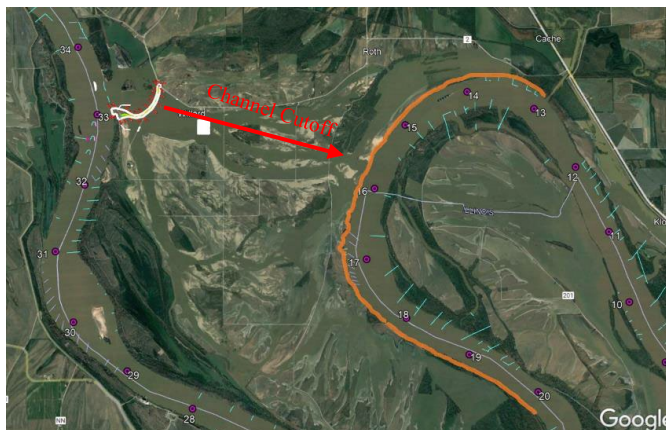




US Army Corps  
of Engineers®  
St. Louis District

# Information Paper

## Mississippi River between the Ohio and Missouri Rivers-Regulating Works Construction (Navigation)



**Figure 1: Dogtooth Bend Phases 7 project limits (River mile 13 upstream to approximately review mile 20)**

### Contact

Mike Rodgers, Project Manager  
(314) 779-6342  
[michael.t.rodgers@usace.army.mil](mailto:michael.t.rodgers@usace.army.mil)

### Location

The project consists of providing a sustainable navigation channel nine feet deep and not less than 300 feet wide with additional width in bends, from the mouth of the Ohio River to the mouth of the Missouri River, a distance of 195 river miles.

### Description

Project improvements are achieved by means of dike and revetment construction, construction dredging, and rock removal.

### Status

Overall Project completion is at 85% complete. An economic analysis was completed in 2019, and benefit cost ratio is 174:1. Dogtooth Bend's urgent and compelling construction was completed in January of 2021. Dogtooth Bend Phase 7 (partial) task order was awarded with. Work to be complete in 2025.

### Importance

The Mississippi River is an artery of commerce critical to the movement of hundreds of millions of tons of essential goods, such as corn, grain, coal, petroleum, chemicals, and many other products important to the national economy.

Visit the website below for more information:

<https://www.ajot.com/news/st-louis-region-remains-home-to-the-nations-most-efficient-inland-port>

### Authority

Rivers and Harbors Acts of 1910, 1927, and 1930.

### Schedule

Dogtooth Bend Phase 7 contract was awarded in August 2023. Construction will be completed in 2025. Regulating Works is not in the 2025 President's Budget.

### Activities for FY25

Construction of Dogtooth Bend Revetments at Mississippi River Miles 13-20.

### Activities after FY25

Emergency overflow structure constructed in 2021 with construction of downstream revetments are ongoing. These construction measures will reduce the risk of a full navigation channel loss by multiple factors. Recent funding request of \$17.5M will be used to fully fund Dogtooth Bend Phase 7 revetments and work on new design measures to reduce chronic dredge locations on the Middle Mississippi River.

### Project Sponsor/Customer

This project is 100% federally funded. Stakeholders include: river navigation industry, state and federal conservation agencies, and environmental non-governmental organizations.

### Congressional Interest

Senate: Schmitt and Hawley (MO)  
Senators Durbin and Duckworth (IL)  
House: Bost (IL-12), Miller (IL-15), Budzinski (IL-13),  
Onder (MO-3), Bell (MO-1), and Smith (MO-8)

### Financial

Federal funding	\$374,153,000
Non-federal funding	\$0
Total Project Cost	\$374,153,000

Federal Funds Allocated to Date	\$325,771,000
---------------------------------	---------------